

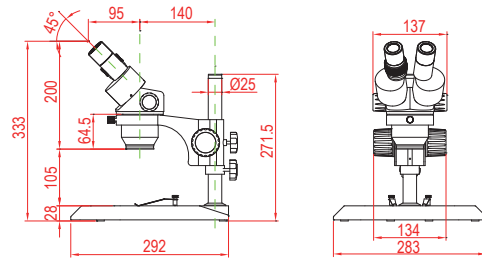
MTS 系列两档变倍体视显微镜
Series Dual Magnification Stereo Microscopes

定位精确
Accurate
Positioning

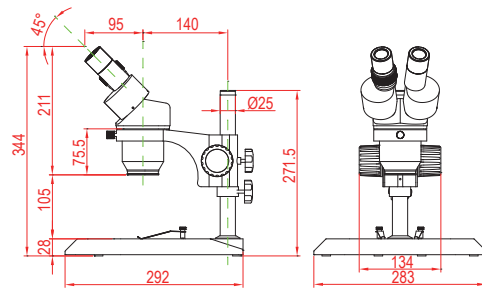
大景深
Large Depth
Of View

工作距离长
Long WD

MTS112+SD1



MTS312+SD1



MTS系列包括MTS100, MTS300两大类

- ◎ MTS100包含MTS112, MTS113, MTS124三个型号
 - 独特的光学设计, 具有超长工作距离和大景深
 - 超广角高眼点目镜
 - 水平手轮变倍, 操作更方便
 - 广泛应用于矿物标本研究、精密零件装配、工业生产流水线及微小物体检测。
- ◎ MTS300包含MTS312, MTS313, MTS324三个型号
 - 垂直旋转变倍, 定位精确, 齐焦性能极佳
 - 超广角高眼点目镜
 - 特别适合工业生产流水线长期使用

MTS series includes MTS100 & MTS300

- ◎ MTS100 includes MTS112, MTS113, MTS124
 - ◆ Unique optical design, extra long working distance, large depth of fields
 - ◆ High eye-point and extra wide-field eyepieces.
 - ◆ Horizontal axial drive control knobs, easy to operation
 - ◆ Extensively used in mineral specimen researching, precision components assembling, industry product line and weeny objects inspection
- ◎ MTS300 includes MTS312, MTS313, MTS324
 - ◆ Change magnification by the turret body, orientation precision, excellent parfocal performance
 - ◆ High eye point and extra wide-field eyepieces
 - ◆ Especially be long time used in industry product line

MTS series

技术规格 Technology Specifications

变倍方式 / Zoom driver	MTS100系列水平手轮变倍 / change magnification by knobs MTS300系列垂直旋转变倍 / change magnification by the turret
目镜 / Eyepiece	SWH10X高眼点超广角目镜, 视场Φ23mm SWH10X high eye point & extra wide field eyepiece , FOV Φ23mm
镜筒 / Eytubes	倾斜45° / Inclined 45°
工作距离 / WD	105m
调焦范围 / Focus adjustment range	50mm (方立柱时为100mm / track stand: 100mm)
瞳距调节范围(用10X 目镜) Interpupillary distance adjustment range (10X eyepiece)	52mm~76mm
视度调节范围 / Diopter adjustment range	±6° (左镜筒 / left eyetube)
支架与主机配合尺寸 The holder and the head matching dimension	Φ76mm
立柱中心到支架中心尺寸 Distance between the center of the pole and the center of the holder	140mm
圆立柱尺寸 / Diameter of the pole	Φ25mm
中心工作台直径 Diameter of the center working stage	Φ95mm
光源 / Illuminators	可配荧光灯透射照明 (5W), 卤钨灯反射照明 (6V、10W可调) Optional illumination:5W fluorescent lamp at the bottom; halogen lamp(6V、10W) on the top.

光学参数 Optical specifications

型号 Model	物镜 Objective	目镜 / Eyepiece							
		SWH10X		SWF15X		SWF20X		SWF30X	
		总放大倍数 Total Mag.	视场直径 FOV (mm)	总放大倍数 Total Mag.	视场直径 FOV (mm)	总放大倍数 Total Mag.	视场直径 FOV (mm)	总放大倍数 Total Mag.	视场直径 FOV (mm)
MTS112 MTS312	1X	10X	Φ23	15X	Φ17	20X	Φ14	30X	Φ9
	2X	20X	Φ11.5	30X	Φ8.5	40X	Φ7	60X	Φ4.5
MTS113 MTS313	1X	10X	Φ23	15X	Φ17	20X	Φ14	30X	Φ9
	3X	30X	Φ7.67	45X	Φ5.67	60X	Φ4.67	90X	Φ3
MTS124 MTS324	2X	20X	Φ11.5	30X	Φ8.5	40X	Φ7	60X	Φ4.5
	4X	40X	Φ5.75	60X	Φ4.25	80X	Φ3.5	120X	Φ2.25

可选附件 Optional Accessories

	底座组 / Stands	SD1~SD18
	万能支架 / Universal stands	U1, U2, U3, U4, U1c, U2c, U3c
	目镜 / Eyepieces	WF5, SWH10X, SWF15X, SWF20X, SWF30X
	分划目镜 / Divisional eyepieces	SWH10X-CM0.1XY SWF15X-CM0.05XY SWF20X-CM0.05XY
	辅助光源 / Auxiliary illuminators	ML01, ML02, MLR60, LGY-150Ω
	宝石专用装置 Dark field attachment and Gem clamp	DC01, CJ01
	机械载物台 / Mechanical stage	S7650, S10086

其它配置机型示例 Adopt With Different Accessories Example

