

MZS0740

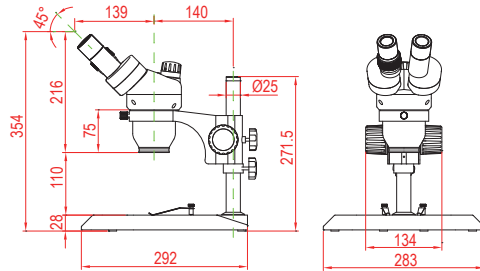
系列格里诺光学系统连续变倍体视显微镜
Series Greenough Optical System Zoom Stereo Microscopes

高清晰
High Definition

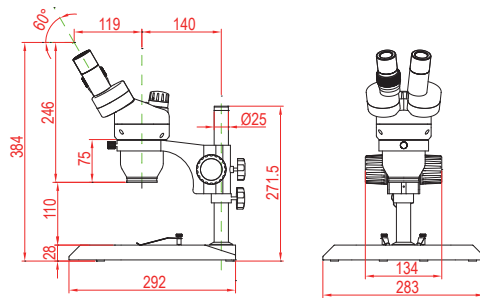
大景深
Large Depth
Of View

垂直手轮变倍
Zoom By Vertical
Hand Wheel

MZS0740+SD1



MZS0740/60° +SD1



- MZS0740 (45° 双目倾斜), MZS0740/60° (60° 双目倾斜)
- 采用独特高清晰度光学系统, 垂直手轮变倍, 大景深, 齐焦性能突出
- 广泛用于微电子、精密加工和其它科技工业领域
- ◆ MZS0740(binocular inclined 45° and MZS0740/60° (binocular inclined 60°)
- ◆ Adopted with particular high definition optical system, vertical hand wheel to zoom, large depth of field, excellent parfocal performance
- ◆ Extensively used for microelectronics, exact manufacture and the other science and technology industry field

MZS0740 series

技术规格 Technology Specifications

| | |
|--|---|
| 放大倍率 / Magnification | 总放大倍率7X~40X (标准配置), 可扩充最大总放大倍率240X Total magnification(standard outfits): 7X~40X, extended total magnification: 240X |
| 目镜 / Eyepiece | SWH10X高眼点超广角目镜, 视场Φ23mm SWH10X high eye point & extra wide-field eyepiece ,FOV Φ23mm |
| 镜筒 / Eyetubes | 倾斜45° / 60° Inclined 45° / 60° |
| 工作距离 / WD | 110mm |
| 调焦范围 / Focus range | 50mm (方立柱时为100mm/ track stand: 100mm) |
| 瞳距调节范围(用10X 目镜) Interpupillary distance adjustment range (10X eyepiece) | 52mm~76mm |
| 视度调节范围 / Diopter adjustment range | ±6° (仅左镜筒/Only left drawtube) |
| 支架与主机配合尺寸 The holder and the head matching dimension | Φ76mm |
| 立柱中心到支架中心尺寸 Distance between the center of the pole and the center of the holder | 140mm |
| 圆立柱尺寸 / Diameter of the pole | Φ25mm |
| 中心工作台直径 Diameter of the center working stage | Φ95mm |
| 光源 / Illuminators | 可配荧光灯透射照明 (5W), 卤钨灯反射照明 (6V、10W可调) Optional illumination:5W fluorescent lamp at the bottom; halogen lamp(6V、10W) on the top. |



光学参数 Optical specifications

| 目镜 Eyepiece | 项目 / Item | 主机 / Main body | 附加物镜 / Auxiliary objective | | | | |
|----------------|--------------------|----------------|----------------------------|-------------|------------|------------|------------|
| | | | 0.37X | 0.5X | 0.7X | 1.5X | 2X |
| 10X | 总放大倍率 / Total Mag. | 7X~40X | 2.59X~14.8X | 3.5X~20X | 4.9X~28X | 10.5X~60X | 14X ~80X |
| | 视场直径 / FOV(mm) | Φ32.8~Φ5.75 | Φ88.8~Φ15.5 | Φ65.7~Φ11.5 | Φ46.9~Φ8.2 | Φ21.9~Φ3.4 | Φ16.4~Φ2.6 |
| 15X | 总放大倍率 / Total Mag. | 10.5X~60X | 3.89X~22.2X | 5.3X~30X | 7.4X~42X | 15.8X~90X | 21X~120X |
| | 视场直径 / FOV(mm) | Φ24.3~Φ4.3 | Φ65.6~Φ11.5 | Φ48.6~Φ8.5 | Φ34.7~Φ6.1 | Φ16.2~Φ2.8 | Φ12.1~Φ2.1 |
| 20X | 总放大倍率 / Total Mag. | 14X~80X | 5.18X~29.6X | 7X~40X | 9.8X~56X | 21X~120X | 28X~160X |
| | 视场直径 / FOV(mm) | Φ20~Φ3.5 | Φ54.1~Φ9.5 | Φ40~Φ7 | Φ28.6~Φ5 | Φ13.3~Φ2.3 | Φ10~Φ1.8 |
| 30X | 总放大倍率 / Total Mag. | 21X~120X | 7.77X~44.4X | 10.5X~60X | 14.7X~84X | 31.5X~180X | 42X~240X |
| | 视场直径 / FOV(mm) | Φ12.9~Φ2.3 | Φ34.7~Φ6.1 | Φ25.7~Φ4.5 | Φ18.4~Φ3.2 | Φ8.6~Φ1.5 | Φ6.4~Φ1.1 |
| 工作距离 / WD(mm) | | 110 | 275 | 195 | 145 | 50 | 35 |

注：1.使用0.37X物镜时，需使用加长圆柱，不能使用方立柱底座组。2.使用0.5X以下倍率的物镜时，不能使用方立柱底座组。

NOTES: 1. Please use lengthened round pole when using 0.37X objective, track stands cannot be used.

2. When 0.5X or lower magnification objective applied, track stands cannot be used.

可选附件 Optional Accessories

| | | | | | |
|--|------------------------------|--|--|--|----------------------------------|
| | 底座组 Stands | SD1~SD18 | | 附加物镜 Auxiliary objectives | W0.37, W0.5, W0.7, W1.5, W2.0 |
| | 万能支架 Universal stands | U1, U2, U3, U4, U1c, U2c, U3c | | 辅助光源 Auxiliary illuminators | ML01, ML02, MLR60, LGY-150Ω |
| | 目镜 Eyepieces | WF5, SWH10X, SWF15X, SWF20X, SWF30X | | 宝石专用装置 Dark field attachment and Gem clamp | DC01, CJ01 |
| | 分划目镜 Divisional eyepieces | SWH10X-CM0.1XY, SWF15X-CM0.05XY, SWF20X-CM0.05XY | | 机械载物台 Mechanical stage | S7650, S10086 |

MZS0740 series

其它配置机型示例 Adopt With Different Accessories Example

