

MZS0655 系列格里诺光学系统连续变倍体视显微镜

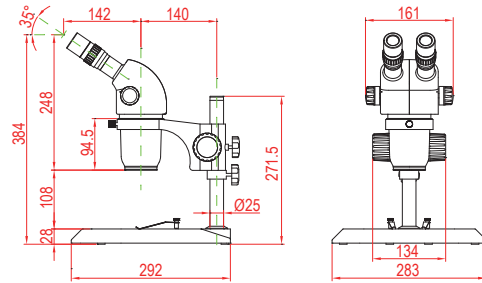
Series Greenough Optical System Zoom Stereo Microscopes

大变倍比
Large Zoom
Ratio

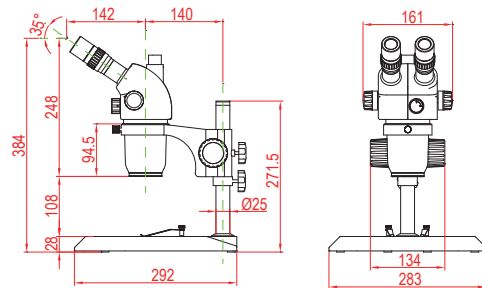
大景深
Large Depth
Of View

长工作距离
Long WD

MZS0655+SD1



MZS0655T+SD1



- 运用专利技术设计
- 长工作距离，大景深，大变倍比
- 三目主机可接CCD（CMOS）摄像头，数码相机
- 多种倍率目镜、分划目镜和大物镜可选
- 可配各种底座和万能支架，LED环形灯、环形荧光灯、光纤等多种照明
- 广泛用于学校、生物工程和科学研究、工业装配、测试测量以及品质控制

- ◆ Patented technology design
- ◆ Long working distance, large depth of field, large zoom ratio
- ◆ Trinocular main body can be match CCD (CMOS) camera, digital camera
- ◆ Various eyepieces, divisional eyepieces and auxiliary objectives to be selected
- ◆ Available to match stands and universal stands, LED ring illuminator, ring fluorescent lamp, fiber and etc.
- ◆ Widely used in schools, biology engineering and science research, industry assembly for inspection, measurement and quality control

MZS0655 series

技术规格 Technology Specifications

放大倍率 / Magnification	总放大倍率6X~55X（标准配置），可扩充最大总放大倍率330X Total magnification(standard outfits): 6X~55X, extended total magnification: 330X
变倍比 / Zoom ratio	0.6X~5.5X连续变倍镜体，变倍比为9.2:1 / Continuous zoom magnification: 0.6X~5.5X, zoom ratio 9.2:1
目镜 / Eyepiece	SWH10X高眼点超广角目镜，视场Φ23mm SWH10X high eye point & extra wide-field eyepiece ,FOV Φ23mm
镜筒 / Eytubes	倾斜35° / Inclined 35°
工作距离 / WD	108mm
调焦范围 / Focus range	50mm（方立柱时为100mm/ track stand: 100mm）
瞳距调节范围(用10X目镜) Interpupillary distance adjustment range (10X eyepiece)	52mm~76mm
视度调节范围 / Diopter adjustment range	±6°
支架与主机配合尺寸 The holder and the head matching dimension	Φ76mm
立柱中心到支架中心尺寸 Distance between the center of the pole and the center of the holder	140mm
圆立柱尺寸 / Diameter of the pole	Φ25mm
中心工作台直径 Diameter of the center working stage	Φ95mm
光源 / Illuminators	可配荧光灯透射照明（5W），卤钨灯反射照明（6V、10W可调） Optional illumination:5W fluorescent lamp at the bottom; halogen lamp(6V、10W) on the top.

光学参数 Optical specifications

目镜 Eyepiece	项目 / Item	主机 / Main body	附加物镜 / Auxiliary objective				
			0.37X	0.5X	0.7X	1.5X	2X
10X	总放大倍率 / Total Mag.	6X~55X	2.22X~20.4X	3X~27.5X	4.2X~38.5X	9X~82.5X	12X~110X
	视场直径 / FOV(mm)	Φ38.3~Φ4.2	Φ99.1~Φ10.8	Φ76.7~Φ8.4	Φ54.8~Φ6	Φ25.6~Φ2.8	Φ19.2~Φ2.1
15X	总放大倍率 / Total Mag.	9X~82.5X	3.33X~30.5X	4.5X~41.25X	6.3X~57.75X	13.5X~123.75X	18X~165X
	视场直径 / FOV(mm)	Φ28.3~Φ3.1	Φ76.6~Φ8.35	Φ56.7~Φ6.2	Φ40.5~Φ4.4	Φ18.9~Φ2.1	Φ14.2~Φ1.5
20X	总放大倍率 / Total Mag.	12X~110X	4.44X~40.7X	6X~55X	8.4X~77X	18X~165X	24X~220X
	视场直径 / FOV(mm)	Φ23.3~Φ2.5	Φ63.1~Φ6.9	Φ46.7~Φ5.1	Φ33.3~Φ3.6	Φ15.6~Φ1.7	Φ11.7~Φ1.3
30X	总放大倍率 / Total Mag.	18X~165X	6.66X~61.1X	9X~82.5X	12.6X~115.5X	27X~247.5X	36X~330X
	视场直径 / FOV(mm)	Φ15~Φ1.6	Φ40.5~Φ4.4	Φ30~Φ3.3	Φ21.4~Φ2.3	Φ10~Φ1.1	Φ7.5~Φ0.8
工作距离 / WD(mm)		108	275	195	145	50	35

注：1.使用0.37X物镜时，需使用加长圆柱，不能使用方立柱底座组。2.使用0.5X以下倍率的物镜时，不能使用方立柱底座组。

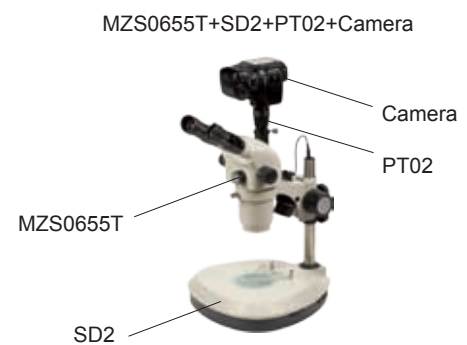
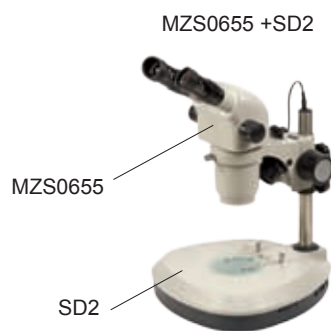
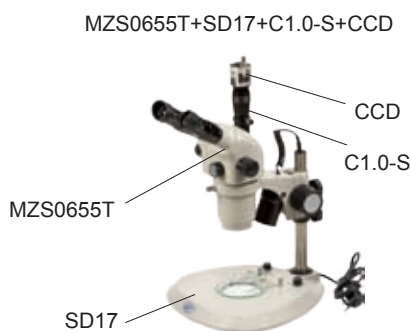
NOTES: 1. Please use lengthened round post when using 0.37X objective, track stands cannot be used.

2. When 0.5X or lower magnification objective applied, track stands cannot be used.

可选附件 Optional Accessories

	底座组 Stands	SD1~SD18		数码相机接头 Digital camera adapter	DT01
	万能支架 Universal stands	U1, U2, U3, U4, U1c, U2c, U3c		显微摄影装置 Digital camera adapter	PT02
	目镜 Eyepieces	WF5X, SWH10X, SWF15X, SWF20X, SWF30X		1X带测微尺 CCD接头 1X CCD adapter with micrometer	CDM1.0
	分划目镜 Divisional eyepieces	SWH10X-CM0.1XY, SWF15X-CM0.05XY, SWF20X-CM0.05XY		辅助光源 Auxiliary illuminators	ML01, ML02, MLR60, LGY-150Ω
	附加物镜 Auxiliary objectives	W0.37, W0.5, W0.7, W1.5, W2.0		宝石专用装置 Dark field attachment and Gem clamp	DC01, CJ01
	CCD接头 CCD adapter	C0.3-S、C0.5-S、C1.0-S		机械载物台 Mechanical stage	S7650, S10086

其它配置机型示例 Adopt With Different Accessories Example



※本系列部分产品已获得国家专利授权，受相关国家法律法规保护。专利号：ZL 2010 2 0195207.6

Some items of this series have obtained national patents, and protected by related national laws and regulations. Patent number: ZL 2010 2 0195207.6