

- 包括MZD0212, MZD0318, MZD0745系列
- 物镜连续变倍, 多种倍率, 可设置定格定倍
- 有多种倍率主机, 各种辅助光源, 底座和CCD接头可供选择
- MZD0745C含MLC100A可调光同轴照明, CS型及C型通用接口, 直接与CCD摄像头连接产生视频信号
- 广泛应用于半导体设备, LCD, LED的加工、检验以及二维、三维测量系统
- ◆ MZD0212, MZD0318, MZD0745
- ◆ Objective Lens continuous magnification, a variety of magnifications, can be pre-set stops with detents
- ◆ Various main body, auxiliary illuminators, stands and CCD adapters are available
- ◆ MZD0745C contains coaxial illuminator and CS-mount & C-mount can be equipped with CCD camera
- ◆ Widely applied in inspection on production of semiconductor equipments, LCD, LED and two-dimensional, three-dimensional measurement systems



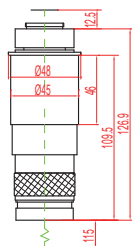
技术规格 Technology Specifications

- 物镜连续变倍, 多种倍率, 可设置定格定倍
- 可配同轴照明(MZD0745C, MZD0745C-A)
- 支架与主机配合尺寸: $\Phi 45\text{mm}$
- 圆立柱直径为 $\Phi 25\text{mm}$
- 有多种倍率主机、各种辅助光源和底座可选择 (CCD摄像头为选购件)
- ◆ Objective Lens continuous magnification, a variety of magnifications, can be pre-set stops with detent
- ◆ MZD0745C & MZD0745C-A contain coaxial illuminator
- ◆ Holder and zoom lens match dimension: $\Phi 45\text{mm}$.
- ◆ Diameter of round Pole is $\Phi 25\text{mm}$
- ◆ Various lens, auxiliary illuminators and stands to be selected. (CCD excluded)

可选附件 Optional Accessories

- 附加物镜: D-W0.5, D-W0.7, D-W2.0 (须前组物镜下端带外螺纹)
- 辅助光源: MLC100A, MLC1000, MLR25
- CS及C型通用CCD接头: C0.5, C1.0
- 可选底座及支架
- ◆ Auxiliary objectives: D-W0.5, D-W0.7, D-W2.0 (the bottom of the fore-end objective has to be with the external thread).
- ◆ Auxiliary illuminators: MLC100A, MLC1000, MLR25
- ◆ CS & C-mount universal CCD adapters: C0.5, C1.0
- ◆ Optional stands and holders

MZD0212



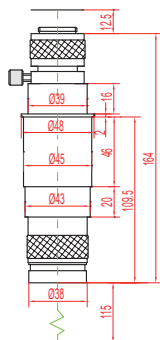
安装尺寸 / Mounting dimension: $\Phi 45\text{mm}$
最大兼容相机 / Max compatible camera: 1/3"
CCD螺纹接口 / Screw mount: 1英寸32扣
1 inch 32 button

附加物镜 / Auxiliary objectives	光学项目 / Optical items	MZD0212
---	光学放大倍率 / Optical Mag.	0.2X~1.2X
	视场范围 / FOV(mm)	18X24~3X4
	工作距离 / WD(mm)	115
0.5X	光学放大倍率 / Optical Mag.	0.1X~0.6X
	视场范围 / FOV(mm)	36X48~6X8
	工作距离 / WD(mm)	195
0.7X	光学放大倍率 / Optical Mag.	0.14X~0.84X
	视场范围 / FOV(mm)	25.7X34.3~4.3X5.7
	工作距离 / WD(mm)	145
2X	光学放大倍率 / Optical Mag.	0.4X~2.4X
	视场范围 / FOV(mm)	9X12~1.5X2
	工作距离 / WD(mm)	35
变倍主体连续变倍范围 / Zoom range		0.2X~1.2X

倍率 / Mag.	NA	景深 / DOF	分辨率 / Resolution	TV失真 / Distortion
0.2X	0.024	8.3mm	14.0 μm	0.90%
0.6X	0.055	1.2mm	6.1 μm	0.10%
1.2X	0.071	0.47mm	4.7 μm	0.60%

※本系列产品已获得国家专利授权, 受相关国家法律法规保护。
This series have obtained national patents, and protected by related national laws and regulations.

MZD0318

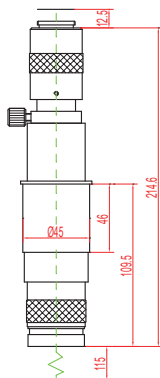


附加物镜 / Auxiliary objectives	光学项目 / Items	MZD0318
----	光学放大倍率 / Optical Mag.	0.3X~1.8X
	视场范围 / FOV(mm)	12X16~2X2.7
	工作距离 / WD(mm)	115
0.5X	光学放大倍率 / Optical Mag.	0.15X~0.9X
	视场范围 / FOV(mm)	24X32~4X5.3
	工作距离 / WD(mm)	195
0.7X	光学放大倍率 / Optical Mag.	0.21X~1.26X
	视场范围 / FOV(mm)	17.1X22.9~2.9X3.8
	工作距离 / WD(mm)	145
2X	光学放大倍率 / Optical Mag.	0.6X~3.6X
	视场范围 / FOV(mm)	6X8~1X1.3
	工作距离 / WD(mm)	35
变倍主体连续变倍范围 / Zoom body magnification range		0.3X~1.8X

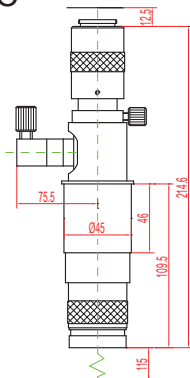
安装尺寸 / Mounting dimension: $\Phi 45\text{mm}$
最大兼容相机 / Max compatible camera: 1/2"
CCD螺纹接口 / Screw mount: 1英寸32扣
1 inch 32 button

倍率 / Mag.	NA	景深 / DOF	分辨率 / Resolution	TV失真 / Distortion
0.3X	0.023	5.8mm	14.6 μm	0.12%
1.0X	0.058	0.69mm	5.8 μm	0.13%
1.8X	0.071	0.31mm	4.7 μm	0.01%

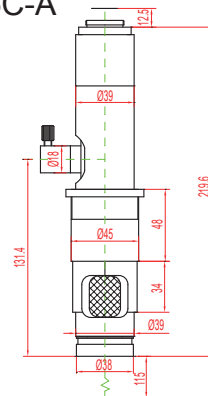
MZD0745



MZD0745C



MZD0745C-A



安装尺寸 / Mounting dimension: $\Phi 45\text{mm}$
最大兼容相机 / Max compatible camera: 1/2"
CCD螺纹接口 / Screw mount: 1英寸32扣
1 inch 32 button

倍率 Mag.	NA	景深 DOF	分辨率 Resolution	TV失真 Distortion
0.7X	0.023	2.5mm	14.6 μm	0.07%
2X	0.052	0.39mm	6.5 μm	0.11%
4.5X	0.072	0.12mm	4.7 μm	0.09%

附加物镜 Auxiliary objectives	光学项目 Items	MZD0745 CCD adapter	
		0.5X	1X
0.5X	光学放大倍率 Optical Mag.	0.175X~1.125X	0.35X~2.25X
	视场范围 FOV(mm)	20.6X27.4~3.2X4.3	10.3X13.7~1.6X2.13
	工作距离 WD(mm)	195	
0.7X	光学放大倍率 Optical Mag.	0.245X~1.575X	0.49X~3.15X
	视场范围 FOV(mm)	14.7X19.6~2.3X3	7.3X9.8~1.14X1.5
	工作距离 WD(mm)	145	
--	光学放大倍率 Optical Mag.	0.35X~2.25X	0.7X~4.5X
	视场范围 FOV(mm)	10.3X13.7~1.6X2.13	5.14X6.9~0.8X1.1
	工作距离 WD(mm)	115	
2X	光学放大倍率 Optical Mag.	0.7X~4.5X	1.4X~9X
	视场范围 FOV(mm)	5.14X6.9~0.8X1.1	2.6X3.4~0.4X0.5
	工作距离 WD(mm)	35	
变倍主体连续变倍范围 Zoom body magnification range		0.7X~4.5X	

※本系列产品已获得国家专利授权，受相关国家法律法规保护。专利号：ZL 2011 2 0131067.0

This series have obtained national patents, and protected by related national laws and regulations. Patent number: ZL 2011 2 0131067.0